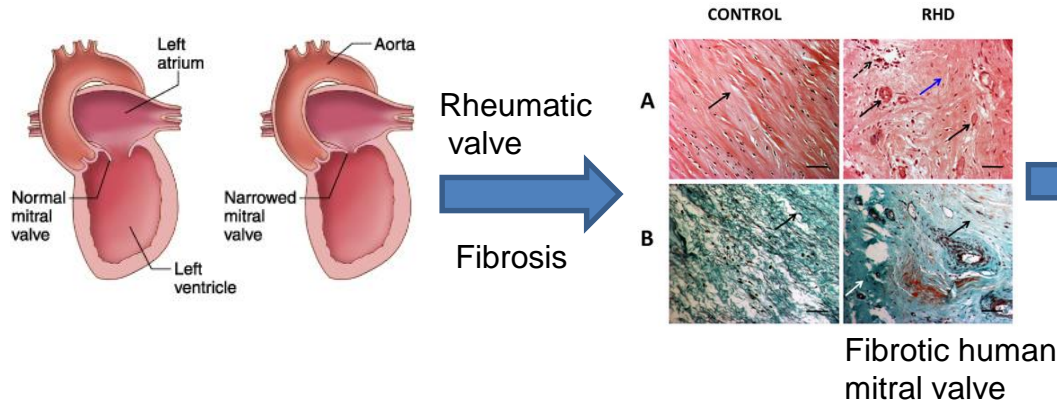


# Detection of Rheumatic Heart Disease (RHD)



Level of PICP



worldwide affected 15 million, mostly developing countries

6 million RHD cases in India (Mostly poor and lower socioeconomic status)



Mainly diagnosed by Echocardiography, not within the reach of poor and rural people

No Biochemical marker available yet

IICB findings: 400 % increase in RHD patients  
ELISA based assay  
CSIR-IICB patent



Prototype for Dip stick/ rapid assay system is already developed

EOI is being invited for further development and licensing out rapid detection system